



Shri Rawatpura Sarkar Group of Institutions
www.sri.ac.in

OUR INSPIRATION



Hon'ble Chairman
His Holiness Anant Shri Vibhushit
Shri Ravi Shankar Ji Maharaj
(Shri Rawatpura Sarkar)



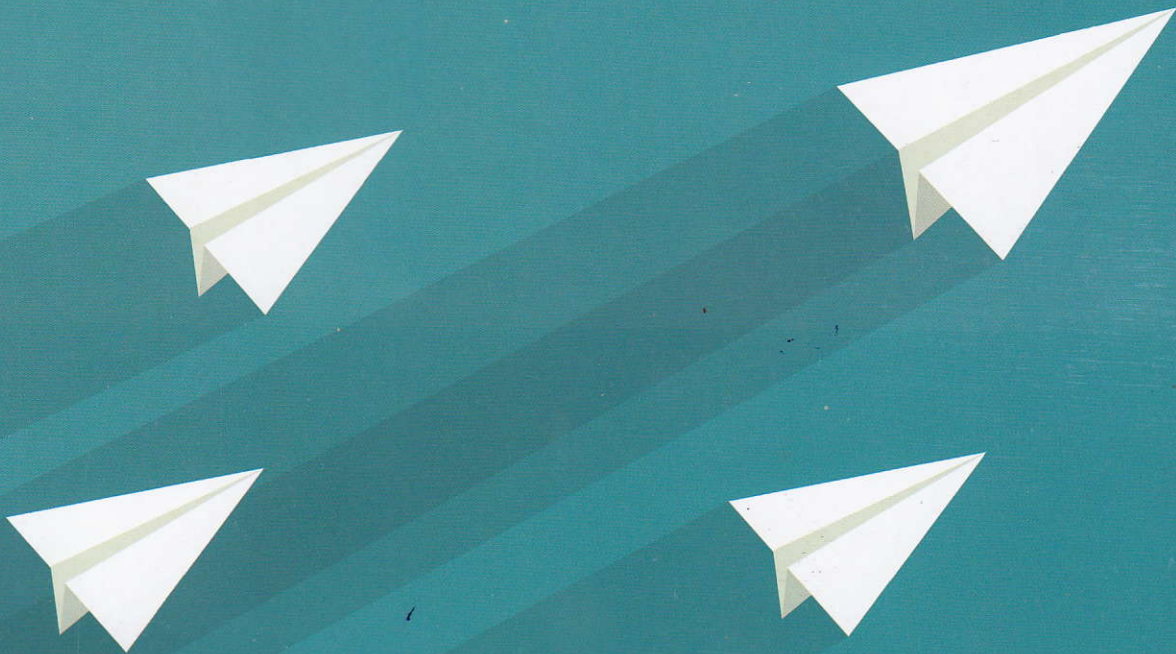
To imbibe a "Scientific spirit, Selfless Service & Values" one kind act can change life of thousands of people. One smile can mesmerize lakhs of people. One courageous step can change the destiny of generations. That is how civilization progresses. Beyond every ones imagination just over 25 years back a great mind believed that loud noises of guns and riffle can be overshadowed by voices of scholars and that is how Rawatpura, Datia & nearby region became spiritual & knowledge centre. The soul responsible to bring about this transformation is a great Saint, Anant Shri Vibhushit Shri Ravi Shankar Ji Maharaj ji, popularly known as "Maharajshri" courageous enough to put his most cherished dream into reality at places that have got no concern with the Professionalism. His message "THINK BIG" and his works speak that "Just dare to think apparently outrageous and tomorrow will be yours". His journey to transform his dream in to reality was not at all simple. It was his consistent hard work and determination that established him as a Messiah. He is the one who is bringing economic as well as social changes to the most needy people.

The **COURAGE** to accept responsibility when others refuse

To have the graciousness to **ACCEPT** if one is wrong

To stand up for one's **BELIEF** when others ridicule

To **INSPIRE** men to dream on when all hope is lost



BELIEVING
IN YOURSELF IS
THE FIRST SECRET TO
SUCCESS



ONE WORLD ONE VISION



In year 2000 His Holiness Maharaj Shri established a Trust called "Shri Rawatpura Sarkar Lok Kalyan Trust" (SRLKT) to reach under privileged society residing in remote areas. SRLKT is registered under Indian Trust Act in March 2000. The board of trustees consist of well known figures. The trust is committed to work in the field of education, health care and social awareness. The Trust is especially working for eradicating ignorance from the society. The Trust aims to impart quality education in various discipline to the downtrodden strata of the society to meet the increasing demands of new millennium. The Trust is also focusing on providing spiritual enrichment of the various sections of the society.

With in short span of 16 years it has made a noticeable presence by establishing number of Ashrams, technical & medical Institutes, old age homes, Sanskrit schools, blood banks, pre-school units etc. SRLKT has taken initiatives for diversification and expansion by setting up new technical Institutions in Central India to achieve its objectives. It also runs vocational courses for giving training to villagers in the field of organic farming, manufacturing of organic manure, biogas etc. Powered by his visionary leadership SRLKT is a conglomerate with the goals.

CHARITABLE NON-PROFIT INNOVATIVE

ABOUT SRI

Dynamic | Vibrant | Fulfilling

Shri Rawatpura Sarkar group of Institutions (SRI) comprises of Engineering, Polytechnic, Management, Pharmacy, Nursing, Education, ITI Colleges each one with its own distinctive style. We have a strong presence throughout Chhatisgarh & Madhya Pradesh with seven main campuses at Naya Raipur, Dhaneli(Raipur), Kumhari(Durg), Jagdalpur, Bilaspur, Shahdol and Jabalpur. It is an innovative and dynamic growing group that covers spectrum of various courses. SRI strives to keep pace with the fast changing world. SRI offers fresh and vibrant environment with the excellent resources and facilities. Set in the picturesque, SRI is the perfect place to work, learn and play. Academic standards are high and we take intellectual life seriously. Our aim is to help all students to develop their academic ability and personal potential. All students who come to SRI are expected to work hard but we also want students to develop a wide range of skills and interests during their time at SRI.



WE BELIEVE

Humanism | Excellence | Progress

VISION

To inculcate humanism, tolerance, reason, progress, fearlessness and truthfulness through education so as to produce integrated men and women free from fear.

MISSION

SRI mission is to emerge as a 'CENTRE OF EXCELLENCE' in the field of education by adopting innovative approaches and to build the structure of dynamic intelligence. It will enable our students to meet the challenges.

OBJECTIVE

- Emphasis on resource oriented multi-directional and interactive teaching method focused on the individual.
- To transform the course of education from livelihood oriented to life oriented.
- Innovative Programmes for overall development of personality.
- Interaction with Industrial units and develop need based R&D.
- Flexibility in Organization and structure of teaching.
- To work constantly in a direction so as to transform people in to ideal human beings thereby ideal society, nation and ultimately the world.

PHILOSOPHY

SRI Philosophy is to impart quality and effectiveness in all activities, networking, helping in holistic development of technocrats based on long cherished values and Principles.



SHRI RAWATPURA SARKAR INSTITUTE OF TECHNOLOGY (SRIT)
SHRI RAWATPURA SARKAR INSTITUTE OF TECHNOLOGY (SRIT-II)

ABOUT SRIT & SRIT-II

SRIT & SRIT-II Raipur is each developed on 10.32 acres of land. The focus of the Institutions is on World-class infrastructure to meet the growing requirement of world standards for technical education and research while at the same time making it as destinations to foreign students in great numbers in turn enabling India to market its tech education abroad.

COURSES OFFERED

S. No	PROGRAMMES	AFFILIATION
1.	Civil Engineering	CSVТУ
2.	Electrical Engineering	CSVТУ
3.	Mechanical Engineering	CSVТУ
4.	Electrical & Electronics Engineering	CSVТУ
5.	Computer Science Engineering	CSVТУ
6.	Electronics & Tele communication Engineering	CSVТУ
7.	Information & Technology	CSVТУ

ADMISSION

Admission is through counseling conducted by DTE Govt. of C.G. on the basis of C.G. PET / IIT-JEE score.

ELEGIBILITY FOR B.E.

- 10+2 examinations passed with minimum 45% marks in PCM. However for ST/SC/OBC students minimum PCM marks required is 40%.

COLLABORATIONS WITH PROFESSIONAL BODIES :

1. The Institute is member of Institutions of Engineer's (India) having code of chapter is 493.
2. The Institute is member of the Indian Society for technical education New Delhi having chapter No. IM- 1679.
3. The Institute has JSTE student chapter with Code No. -MP 33.
4. The Institute has association with Robasapiens technologies Pvt. Ltd. Noida.
5. All Institutes are ISO 9000:2008 certified .

Workshops by eminent academicians, researchers, social workers and corporate giants.

FACILITIES

- Excellent infrastructure
- Young and Dynamic Faculty
- State of Art Computer facility
- Online examination of TCS and other reputed organisations.
- Personality Development Curriculum
- Scholarship for meritorious students
- E-learning and E-teaching environment
- Practical exposure through Industry – Institution Interaction
- Guest lecture series by eminent personalities of the field
- Excellent Library reservoirs
- Own buses for Transport Facility.
- Separate Hostel Facility for Girls & Boys.

LOCATION

BUS STAND : 27 KMS
RAILWAY STATION : 26 KMS
AIR PORT : 14 KMS

BRANCH DETAILS

CIVIL ENGINEERING

The Institute has well equipped Civil Engineering Lab where practical exposures to the students are made and further enriched through visit to factories and construction sites. Students are given exposure to the brick testing through compression testing and environmental awareness.

ELECTRICAL ENGINEERING

Field of engineering that generally deals with the study and application of electricity, electronics and electromagnetism. The field first became an identifiable occupation in the late nineteenth century after commercialization of the electric telegraph and electrical power supply. It now covers a range of subtopics including power, electronics, control systems, signal processing and telecommunications.

MECHANICAL ENGINEERING

One of the core branch of Engineering, it deals with machines, their designs, manufacturing and performance. Modern manufacturing processes have resulted into mass production of items at low cost and high quality. Mechanical Engineers have unique role in Power Plants, Modern Factories, Space, Automobiles, steel plants. Increase in automation has widened the horizons of this branch beyond the conventional jobs.

ELECTRICAL AND ELECTRONICS ENGINEERING

"Become part of the world's techno and eco revolution with a degree in Electrical and Electronic Engineering" How many things in your daily life use power – either mains, batteries, petrol, motors or even solar power? There was an Electrical Engineer behind the creation of every one of those items! Electrical and Electronic Engineering involves the generation, storage and use of power.

COMPUTER SCIENCE ENGINEERING

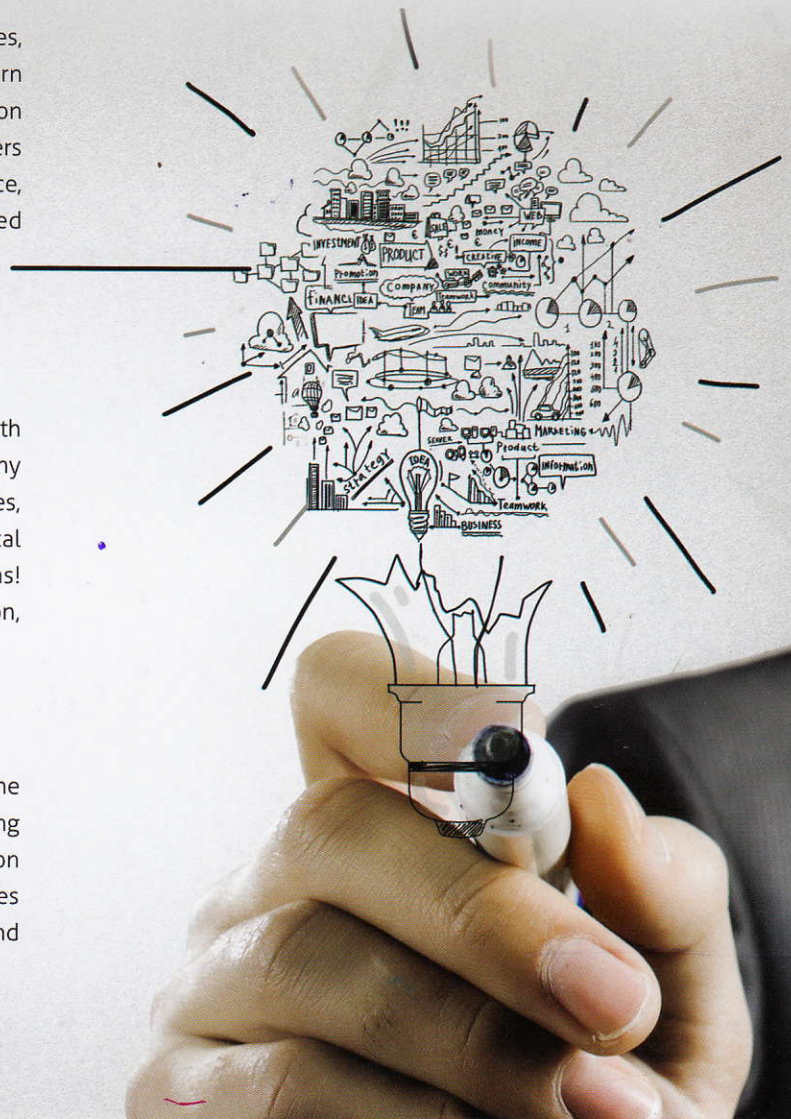
The Programme in Computer Science is designed to meet the needs of the industry in all areas where computing / processing power is required. Alongside, there is research activity going on at several levels in order to improve the functional capabilities of the equipment falling in the broad area of computers and communication.

ELECTRONICS AND TELE-COMMUNICATION ENGINEERING

Electronics and Tele-Communication Engineering has gained importance in recent years due to its versatile application in every facet of engineering field. It mainly deals with the principles of electronic devices and communication technologies along with the basic electronic components, design of circuits and systems.

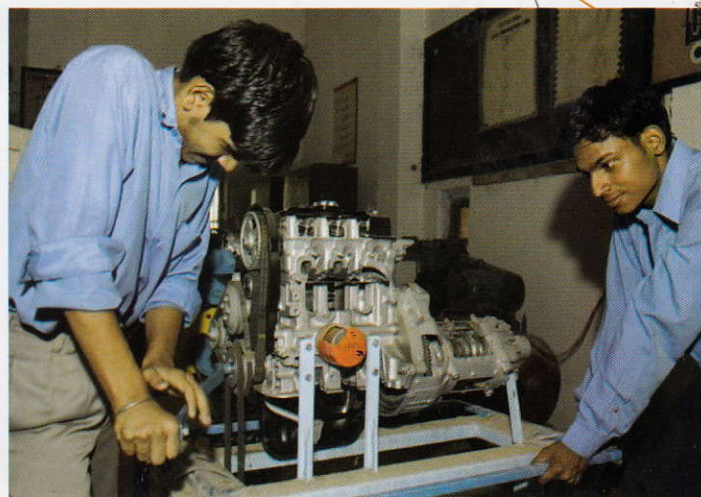
INFORMATION TECHNOLOGY

Information Technology is the study of computer-based information systems, particularly software applications and computer hardware. Information Technology deals with the development, utilization, inter-relation and confluence of computers, networking, telecommunication, business and technology management in the context of global interest.



SHRI RAWATPURA SARKAR POLYTECHNIC

SHRI RAWATPURA SARKAR ITI



ABOUT

The Polytechnic college and ITI is located in Dhaneli (Raipur), it's a Lush green campus of 25 Acres. The Polytechnic college started in the year 2013 and ITI started in the year 2010. Both the institutions are well equipped with state of art Lab Facilities. The closest landmark is Shaddani Darbar - at Dhamtari road.

OBJECTIVE

- To provide valuable technical education in a healthy atmosphere.
- Pro Active participation with Industries.
- To conduct Industry oriented Trainings.

ELIGIBILITY FOR POLYTECHNIC

- Should be 10th pass.
- Should have cleared Pre Polytechnic Test.
- ITI and 12th Maths passed students can take admission in second year through lateral entry.

ELIGIBILITY FOR ITI

- Should be 10th pass.

COURSES OFFERED IN POLYTECHNIC

BRANCHES	DURATION	AFFILIATION
MECHANICAL	3 YEARS	AICTE, CSVTU
ELECTRICAL	3 YEARS	AICTE, CSVTU
CIVIL	3 YEARS	AICTE, CSVTU

COURSES OFFERED IN ITI

COURSES	DURATIONS
COPA (Computer operator & Programming assistant)	1 YEAR
FITTER	2 YEARS
ELECTRICIAN	2 YEARS
DIESEL MECHANIC	1 YEAR

MASTER OF BUSINESS ADMINISTRATION



MBA Course enhances professional attitude and cultivates ethics of corporate world. Inculcates and sharpen's managerial capabilities to become an able technocrat because global economy calls for creating and applying management knowledge. Challenges of international competition can be met only by nurturing global mindset and having a futuristic approach to work. With the same aim SRI has introduced MBA from the year 2009-10 with an aim to Churn out Managers with a difference.

SRI (Department of Management Studies) aims at building a unique Management department which develops leaders and organisation builders who may compete effectively in the corporate world.

Objective of Program

Inculcate professional excellence

- Bridge the gap between conceptual learning and practical approach
- Identify intellectual curiosity
- Impart knowledge of diverse areas pertaining to management
- Provide deep foothold into the corporate framework

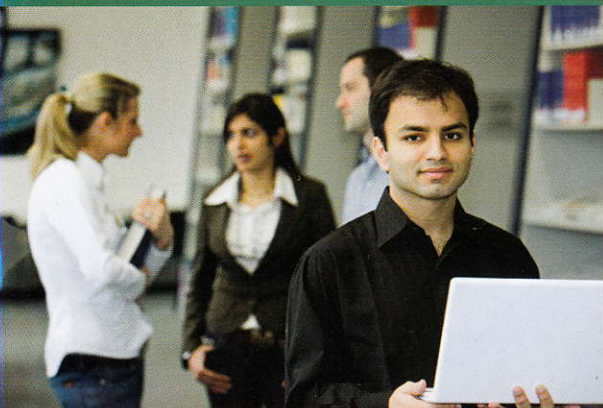
S. No.	Programmes	Affiliation
1	M.B.A. (HR, FINANCE, MARKETING, OPERATIONS)	CSVТУ

Admission in MBA

Admission Selection will be made on the basis of valid ATMA/AIMA/CMAT/MAT score followed by GD/PI as per admission guidelines of CSVТУ and DTE Govt. of C.G.

Eligibility

Graduate degree from recognized university with minimum 50% marks and valid MAT/ATMA/AIMA/CMAT score. Candidates in final year of their graduation may also apply. However SC/ST/OBC are eligible with minimum 45% marks in graduation.



SHRI RAWATPURA SARKAR INSTITUTE OF PHARMACY [SRIP]



ABOUT SRIP

Shri Rawatpura Sarkar Institute of Pharmacy, established in 2004, has emerged as one of the premier Institute in the field of Pharmacy. The Institute is located in Picturesque surrounding of Kumhari, about 16 k.m. from Raipur and 12 k.m. from Bhilai, on NH-6.

MISSION

The mission of SRIP is purported to strive for improving the health care system through out the world and to give access of pharmaceutical care to the needy persons.

FACILITIES

The college houses spacious well laid out, well equipped & well maintained laboratories for different branches of pharmacy :

- Pharmaceutics
- Pharmaceutical chemistry.
- Pharmacognosy & Microbiology
- Pharmacology

All these laboratories have necessary and latest equipments.

OBJECTIVES

- To create an educational environment supportive of diverse roles and learning styles.
- To prepare pharmacists who can deliver competent, compassionate and high quality pharmaceutical care.
- To infuse spirit of serving and nurturing mankind.
- To encourage cultivation of self-education habits that foster lifelong learning.
- To encourage entrepreneurial qualities.
- To foster creativity by giving challenging environment.
- To promote integrity and high ethical standards that contribute to the well-being of patients and society.
- To infuse positive attitude, healthy lifestyle, discipline and dedication.
- To impart values to Students so that they can sustain pressure and stand apart in the crowd.

COURSES OFFERED

LEVEL	DURATION	ELIGIBILITY
Ph.d	2 YEARS	Passed Ph.d Entrance Examination
M.Pharm		
(Pharmaceutics), (Pharmacognosy), (Pharmaceutical Chemistry), (Quality Assurance), Pharmacology	2 YEARS	B.Pharm with 50% & GPAT Non Zero Score
B. Pharm	4 Years	10+2 with PCM / PCB with PPHT
D. Pharm	2 Years	12th with PCB/PCM OR with PPHT

INFRASTRUCTURE

- Institute has well furnished spacious class rooms.
- Well equipped Laboratories.
- Well equipped Library.
- The Institute has well equipped Instrument room with HPTLC, HPLC, UV-VIS Spectrophotometers. Dissolution unit, Disintegration unit, Brookfield viscometer.
- Medicinal garden.
- Drug Museum.
- Animal House.

SRI COLLEGES OF NURSING



OBJECTIVE

To offer professional training, learning environment & opportunity for personal and professional development.

- To encourage community participation and interaction with national health organization.
- To develop clinical teaching, administrative and research skills in students.
- To make them capable of functioning at the beginning level of teaching and management in the health care settings.

COURSES OFFERED

S.No	Course	Duration	Eligibility Criteria
1	M.Sc.Nursing specialities (Med.Sur., Mental H., Community H, OBG)	2 Years	B.Sc.Nursing with 1 Year Experience (Teaching/Clinical) Post Basic B.Sc.N with 1 year Experience
2	Post Basic B.Sc.Nursing	2 Years	GNM with RN & RM No. provided by any State Nursing Council of INDIA.
3	B.Sc.Nursing	4 Years	10+2 with aggregate 45 % in PCBE. However for SC/ST students aggregate 40% in PCBE.
4	GNM	3 ½ Years	10+2 in any stream with aggregate 40%.

SCOPE

- Hospital Nursing
- Community Nursing
- Industrial Nursing
- School Health Nursing
- Teaching in Nursing institutions
- Nursing Administration
- Research opportunities and Higher Studies
- Military Nursing.
- Disaster Nursing.

NURSING COLLEGES OF SRI

Locations	Name of College	University
Kumhari (Durg)	Mother Teresa College of Nursing	AHCU
Dhaneli (Raipur)	Shri Rawatpura Sarkar Institute of Nursing	AHCU
Naya Raipur	Ravishankar Institute of Nursing	AHCU
Bilaspur	Bilasa Institute of Nursing	AHCU
Jagdalpur	Jagdalpur Institute of Nursing	AHCU
Shahdol	Shri Rawatpura Sarkar Institute of Nursing	MPMSU

FACILITIES

- Fundamental Lab
- Anatomy Lab
- Nutrition Lab
- Community Lab
- Audio Visual Lab
- MCH
- Playground
- Seminar Hall
- Recreation Room

- Recognition from : Indian Nursing Council, New Delhi
- Affiliation : AAYUSH & HEALTH SCIENCES UNIVERSITY, Raipur (Chhattisgarh)
- Registration : Chhattisgarh Nurses Registration Council, Raipur (C.G.)

SRI EDUCATION COLLEGES

OBJECTIVE

- Who view themselves as true professionals.
- Whose teaching practice reflects a philosophy of education that encourages the development of all taught.
- Whose practice embodies the Ethical Standard for the Teaching Profession.
- Who engage in habits of creative thinking and critical reflection.
- Who have a strong base of professional knowledge regarding subject matter, psychological, Sociological and cultural influence on learning and regulatory obligation and responsibilities.
- Who use research support and practices to foster the development of each individual people intellectually, socially, culturally and emotionally.
- Who demonstrate care and commitment to people and people's learning SCOPE
- Teaching in Schools, colleges and research Institutes.

COURSES OFFERED

CAMPUS	NAME OF COLLEGE	UNIVERSITY	COURSE
Dhaneli (Raipur)	Ravishankar global education college	Prsu	B.Ed. D.Ed.
Naya raipur	Shri rawatpura sarkar institute of proffesional studies	Prsu	B.Ed. D.Ed.
Kumhari (Durg)	Shri rawatpura sarkar shiksha sansthan	Prsu	M.Ed. B.Ed. D.Ed.

Affiliation : Pt Ravi Shankar Shukla University, Raipur (C.G.), SCERT Raipur.

Recognition from : National Council for Teachers Education (NCTE), Bhopal



RAVISHANKAR INSTITUTE OF TECHNOLOGY AND MANAGEMENT (RITM) - JABALPUR

ABOUT

RITM : The Engineering College is located in Jabalpur, M.P., very close to the world famous tourist spot Bhedaghat, famous for its Marble Rocks, flanking the mighty and sacred river Narmada, RITM is established at Jabalpur with an aim to provide exposure to the talented students of in and around Jabalpur to provide them quality technical education.



ADMISSIONS

- 10+2 examination passed student.
- Selection through PET merit list conducted by Vyavasyik Pareeksha Mandal, Bhopal or through IIT-JEE.
- The applicant placed in the merit list of MPPET shall be called for online counseling by DTE / RGPV, Bhopal at regional nodal centre at several places in the state and given admission/branch allotted in order of merit.
- If PET merit list is exhausted, remaining seats, if any, will be filled by counseling in order of merit in qualifying examination (min. 45% s marks in PCM of 10+2 examination) if permitted by RGPV.
- However qualifying marks for ST/SC/OBC - 40%.

Courses	Duration	Enter level Qualification
Civil Engineering	4 years	Higher secondary under 10+2 system & MPPET Qualified
Electrical Engineering	4 years	Higher secondary under 10+2 system & MPPET Qualified
Mechanical Engineering	4 years	Higher secondary under 10+2 system & MPPET Qualified
Computer Science Engineering	4 years	Higher secondary under 10+2 system & MPPET Qualified
Electronics & communication Engineering	4 years	Higher secondary under 10+2 system & MPPET Qualified

OBJECTIVE

- To provide quality and value based education in the fields of Engineering and Technology to the youth at a reasonable cost.
- To impart sound theoretical and practical knowledge to face the challenging jobs of Engineering Profession.
- To develop the quality of leadership and sense of creativity in the students.
- To develop the attitude to take up entrepreneurship.
- To provide word-class facilities to students at their work place.
- To provide dynamic and enthralling environment so that their stay at institution is productive and fulfilling.
- To establish effective networking with the leading technology educational institutions across the country.
- To promote pro-active partnership with industrio mutual benefits.



SHRI RAWATPURA SARKAR INSTITUTE OF PHYSICAL EDUCATION (SRIPE)



ABOUT

The premier Facility of Shri Rawatpura Sarkar Institute of Physical education was established in 2014 in Pacheda-Raipur. The college is developed in about 8 Acres area.

ADMISSION

Through institute level Entrance Examination.

ELIGIBILITY

Any Graduate with 45% Marks.

ACHIEVEMENTS

- Champions in Inter-college Cricket mains 2015.
- Champions in Inter-college Football mains 2015.
- Champions in Inter college Hitawada Football Trophy.
- Many Students in University Merit List of Top 10.

OBJECTIVE

Our objective is to prepare competitive physical educators imbued with the spirit of professionalism and that of responsible citizenship in a competitive global environment. Using technology to enhance the effectiveness pedagogy & Management. Create positive and continuous learning environment. Ensure optimum participation of all stakeholders in the college activities.



STUDENT CAMPUS LIFE



STUDENT'S CLUB AND ASSOCIATION

A number of professional, recreational, social and academic clubs allow students to wind down after a tough day's work. These clubs provide platform where they can hone networking, communication, presentation and creative skills.

PHYSICAL EDUCATION AND SPORTS

The students are given ample opportunities to explore their talents on field. The Institution offers assistance to talented students so they can excel in field.

STUDENT COUNCIL

A student council is constituted as per direction of State Govt. by nominating topper of respective courses in every year as member of the council and achievers in sports, cultural and literary field. Faculty and Staff members nominated by the Director, act only as advisors to the council.

MONITORING

- Internal Assessment Student's progress is continually assessed through written exams, surprise tests, assignments, class presentation and project works. Internal marks are added to the final marks obtained in University Final examinations.
- Student Affair Office Student Affair Officer keeps close eye on performance of each student and gives time to time feed back to student and parents/ guardian. Regular counseling sessions are being conducted by Student Affair Officer in consultation with Faculty. Student grievances are resolved by setting up 2-3 members committee.
- Course Coordinator Every course has a course coordinator nominated from respective Faculty by Management for smooth conduction of course. He will liaison with respective classes and resolve the issues, in consultation with Management.
- Class Representative He/She is selected by class for 3 months. All matters and information pertaining to Class is dealt by him.
- Feed Back Mechanism A quarterly feed back Performa is filled by students about the conduction of course. These feedbacks are confidential and used to improve the teaching methods and other facilities as required.

SRI CAMPUS





Dhaneli (Raipur) Campus

Dhaneli, Dhamtari Road, Raipur (C.G.)

Telephone : 0771-2222122, 7222910432, 7222910411

Email : sri.admissionenquiry@gmail.com

Naya Raipur (Raipur) Campus

Near Mukhtangan, Champaran Road, Naya Raipur (C.G.)

Telephone : 0771-2222122, 7898917779, 9589093804

Email : sri.admissionenquiry@gmail.com

Kumhari (Durg) Campus

Near Power Grid Corp., Kumahari, Dist. Durg (C.G.)

Telephone : 0771-2222122, 7024111469, 7222910447

Email : sri.admissionenquiry@gmail.com

Bilaspur Campus

Mission Hospital, Bilaspur (C.G.)

Telephone : 0771-2222122, 7222910434

Email : sri.admissionenquiry@gmail.com

Jagdalpur Campus

Aadeshwar Academy Campus, Adawal,
Jagdalpur, Bastar (C.G.)

Telephone : 0771-2222122, 7222910435, 9203918777

Email : sri.admissionenquiry@gmail.com

SRI Shahdol Campus

Besides Congress Bhawan, Budhar Road,
Shahdol college campus,

Near Sohagpur Koni police Station,

Reeva Road, Dist. Shahdol

Telephone : 7024233112, 8349992642

E-mail : srishahdol1008@gmail.com

SRI Jabalpur campus

Near Bhedaghat Square, Jabalpur Madhya Pradesh.

Telephone : 07612830361, 9174639110,

Campus : Naya Raipur | Dhaneli | Bilaspur | Jagdalpur | Chitrakoot | Satna | Sagar | Rawatapura